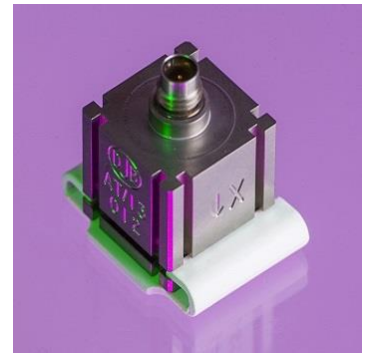


微型压电 IEPE 三轴加速度计: AT/13

灵敏度: 1mV/g ~ 100mV/g (±10%) 重量: 25.9g

最高温度: 185°C

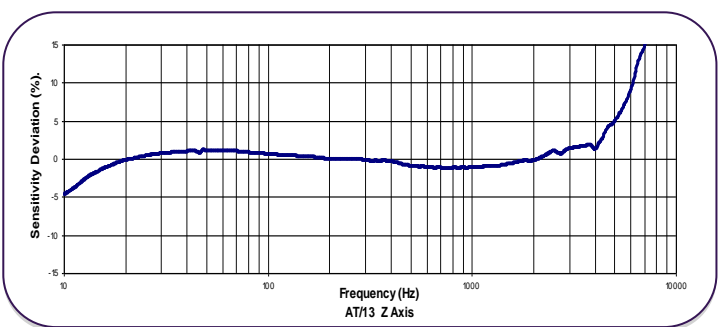
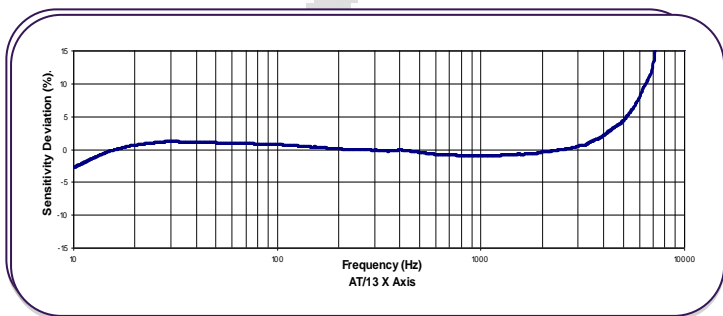
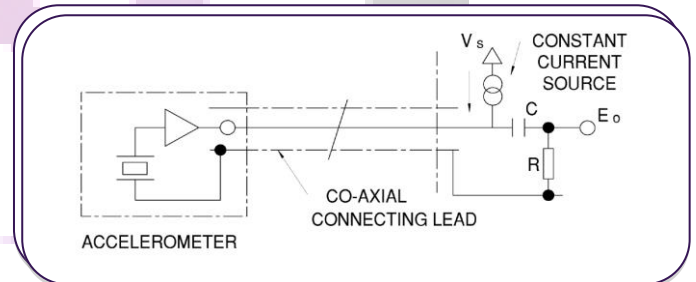
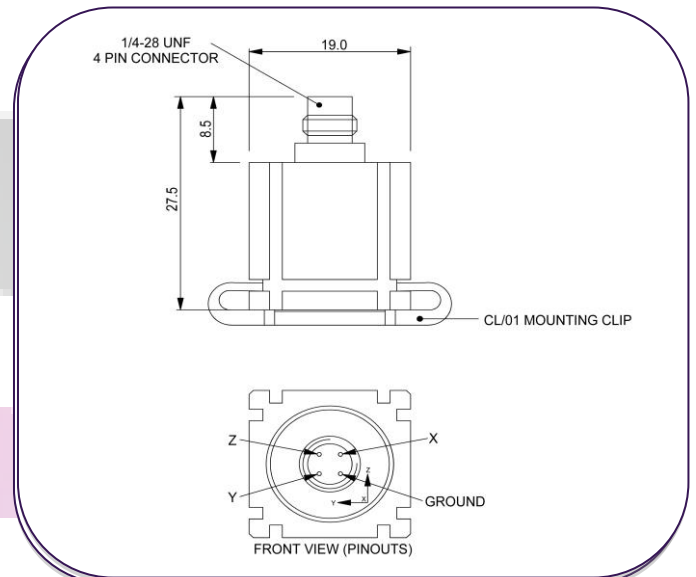


AT / 13主要是为模态分析和结构测试市场开发的, 尤其侧重于汽车和航空航天市场。开槽的侧面和开槽的底座允许通过滑入随附的夹子将其安装在其5个面上。然后, 用户可以使用常规胶水方法安装夹子, 并根据需要将加速度计滑入和滑出夹子。这确保了测试的完美可重复性, 而无需将加速度计留在原地。此外, 对于大通道数测试, 所有加速度计都可以以相同方向安装, 从而简化了软件设置。

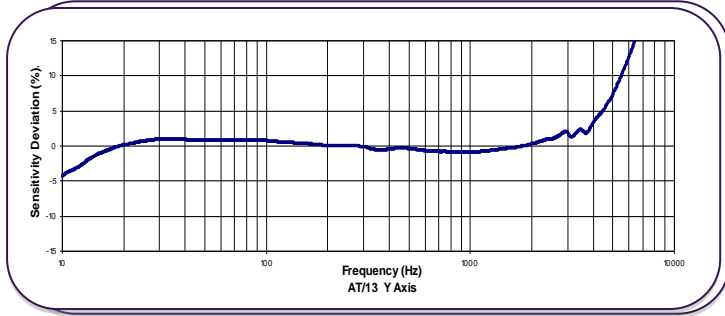
AT / 13采用钛金属制造, 质量轻, 寿命长, 在三个正交轴内部安装了三个独立的Konic Shear传感元件; 这样可在每个轴上提供出色的性能, 而对交叉轴的影响最小。

夹子零件编号CL / 01可以单独订购。CL / 02的底座也较厚, 可以修改以适合特定的用户应用。

还可以与独特的高温IEPE解决方案一起使用, 该解决方案可以测试高达185°C的温度。



Typical Frequency Response



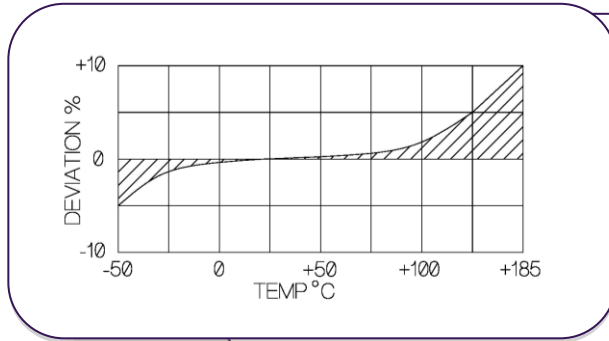
Please note: For information and reference only. Data should not be used as pass / fail criteria for calibration purposes



微型压电 IEPE 三轴加速度计: AT/13

灵敏度: 1mV/g ~ 100mV/g ( $\pm 10\%$ ) 重量: 25.9g 最高温度: 185°C

### Temperature Response



### Typical Spectral Noise (100mV/g)

1Hz	345 $\mu$ g/ $\sqrt{\text{Hz}}$
10Hz	156 $\mu$ g/ $\sqrt{\text{Hz}}$
100Hz	44 $\mu$ g/ $\sqrt{\text{Hz}}$
1kHz	12.1 $\mu$ g/ $\sqrt{\text{Hz}}$
10kHz	8.2 $\mu$ g/ $\sqrt{\text{Hz}}$

	公制			英制		
	0.1mV/(m/s <sup>2</sup> )	1.02mV/(m/s <sup>2</sup> )	10.2mV/(m/s <sup>2</sup> )	1mV/g	10mV/g	100mV/g
Voltage Sensitivity $\pm 10\%$						
Resonant frequency	X / Y Axis 20kHz			Z Axis 33 kHz		
Typical Frequency Response $\pm 5\%$ $\pm 10\%$	1Hz – 5kHz 0.7Hz – 6kHz	1Hz – 5kHz 0.7Hz – 6kHz	20Hz – 5kHz 15Hz – 6kHz	1Hz – 5kHz 0.7Hz – 6kHz	1Hz – 5kHz 0.7Hz – 6kHz	20Hz – 5kHz 15Hz – 6kHz
Cross Axis error	$\leq 5\%$ max					
Temperature Range	-50/+125°C (HT Version 185°C)			-58/+257°F (HT Version 365°F)		
Voltage sensitivity deviation (20°C / 68°F)	-5% @ -50°C +5% @ +125°C (max 185°C)			-5% @ -58°F +5% @ +257°F (max 365°F)		
Supply voltage	15/ 35 V DC					
Supply current	2/15 mA					
Bias voltage (20°C/68°F)	9/10 V DC					
Settling time to 90% final val.	<1 sec					
Max continuous accn.g sine	49033m/s <sup>2</sup>			5000g		
Saturation Limit	49033m/s <sup>2</sup>	4903m/s <sup>2</sup>	490.3m/s <sup>2</sup>	5000g	500g	50g
Base Strain Sensitivity	$\leq 5\%$					
Case material	Titanium Grade 2					
Mounting	Adhesive or CL/01 or CL/02 Mounting Clip					
Weight	25.9g			0.91oz		
Case seal	Welded hermetic connector					
Size	19 x 19 x 19mm			0.75 x 0.75 x 0.75in		
Connector	4 pin ¼-28 UNF					

Please note: For information and reference only. Data should not be used as pass / fail criteria for calibration purposes