

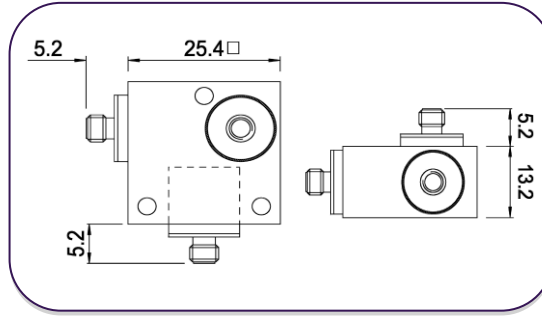
微型压电 IEPE 三轴加速度计：A/130/V

灵敏度：10mV/g ~ 500mV/g (±10%) 重量：40.9g 最高温度：185°C

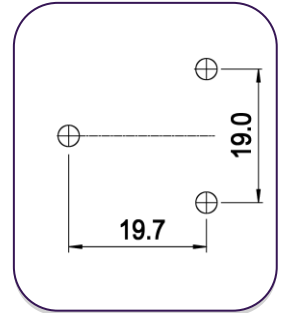


通用三轴振动传感器，由三个Konic剪切IEPE焊接插件组成，它们正交粘结在硬质阳极氧化铝外壳中。插件分别与外壳绝缘，从而消除了接地环路干扰。低阻抗O/P具有高度的抗噪能力（与50Hz的等效电荷源设备相比，等效噪声提高了80 db），并允许与低成本同轴电缆一起使用。结构中隐含的附加机械隔离也几乎消除了应变引起的误差。

A/130/V



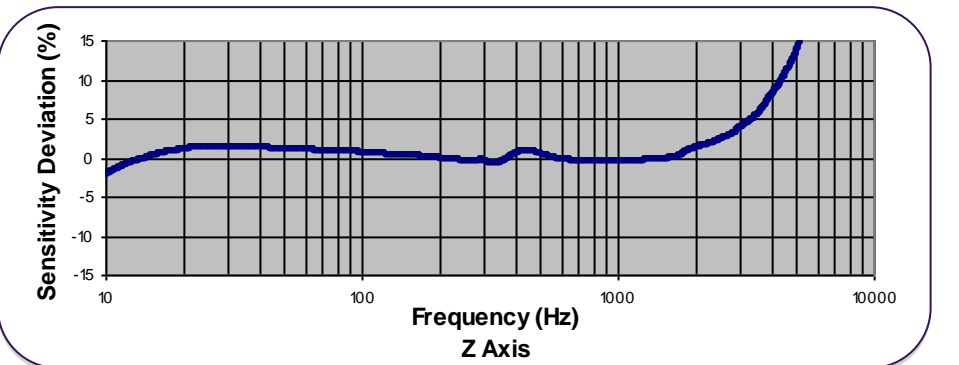
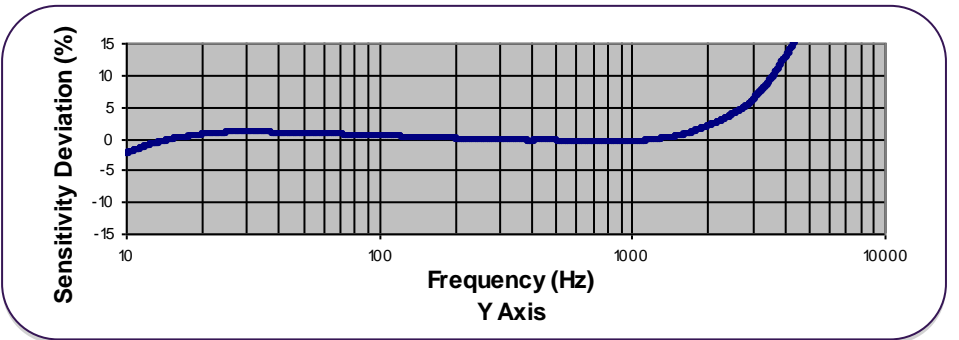
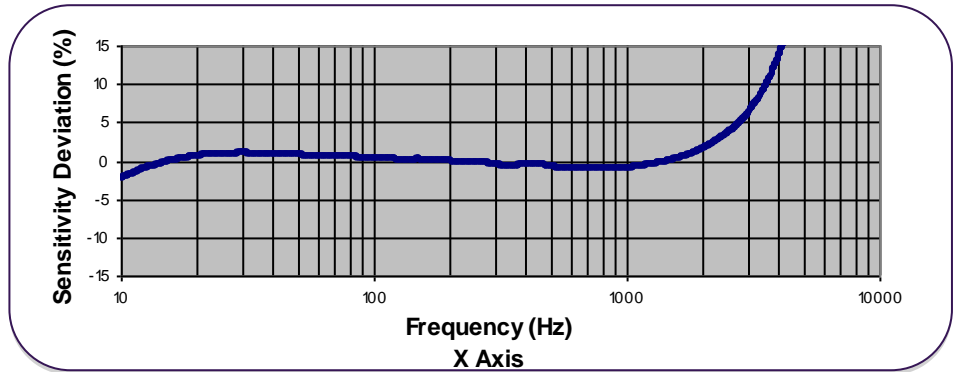
Fixing



Konic设计的d33分量抑制特性可最大程度地减小跨轴误差，这对于三轴测量的完整性尤为有利。

多传感器解决方案还具有可维修的优势。如果插入件损坏，通常可以将其卸下并更换，从而节省了新的加速度计的成本。

Typical Frequency Response



Spectral Noise

1Hz	761µg/√Hz
10Hz	193µg/√Hz
100Hz	37.8µg/√Hz
1kHz	11.2µg/√Hz
10kHz	4.2µg/√Hz

Options:

A/130V
A/130V-1
Available as a high temperature to 185°C IEPE version

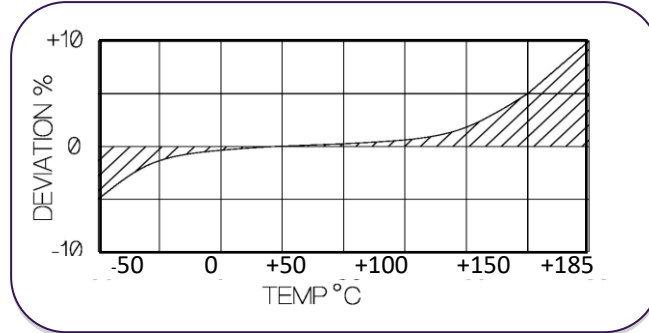
Please note: For information and reference only. Data should not be used as pass / fail criteria for calibration purposes

微型压电 IEPE 三轴加速度计: A/130/V

灵敏度: 10mV/g ~ 500mV/g ($\pm 10\%$) 重量: 40.9g 最高温度: 185°C



Temperature Response



	公制		英制	
	Voltage Sensitivity $\pm 10\%$	1.02 mV/(m/s ²)	10.2 mV/(m/s ²)	10 mV/g
Resonant frequency	X/Y Axis 13kHz Z Axis 15 kHz			
Typical Frequency Response $\pm 5\%$ $\pm 10\%$	1Hz - 3kHz 0.7Hz - 4kHz			
Cross axis error	$\leq 5\%$ max			
Temperature range	-50/ +185°C		-58/+365°F	
Voltage sensitivity deviation re (20°C/68°F)	-5% @-50°C +5% @+185°C		-5% @-58°F +5% @+365°F	
Supply voltage	15/35 V DC			
Supply current	2/15 mA			
Bias voltage (20°C/68°F)	9/10 V DC			
Settling time to 90% final val.	<1 Sec			
Max Continuous accn.g sine	9806m/s ²		1000g	
Saturation limit	4903m/s ²	490.3m/s ²	500g	50g
Base Strain Sensitivity	$\leq 5\%$			
Case/ Block Material	303 S31/ Aluminum			
Mounting	Through hole			
Weight	40.9g		1.44oz	
Case seal	Welded transducer inserts, bonded into hard anodized aluminum block			
Size	25.4 x 25.4 x 13.2mm		1 x 1 x 0.52in	
Connector	3 x 10-32 UNF Microdot			

Please note: For information and reference only. Data should not be used as pass / fail criteria for calibration purposes