

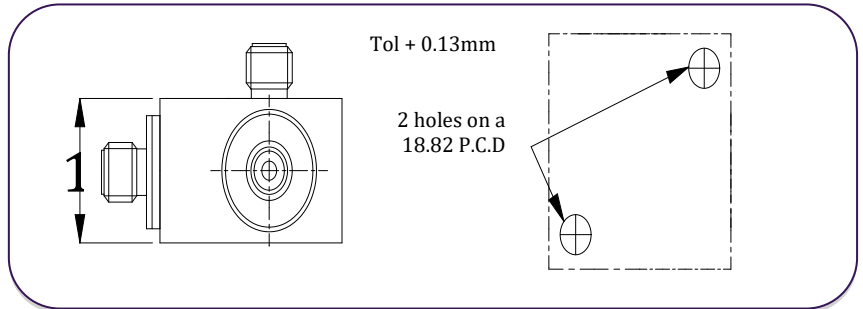


微型压电 IEPE 三轴加速度计: A/131/V

灵敏度: 10mV/g ~ 500 mV/g (±10%) 重量: 19g 最高温度: 125°C

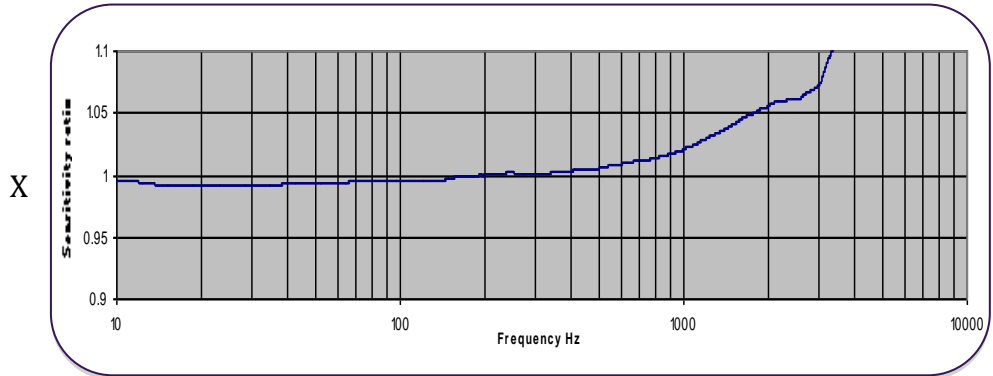
A/131/V

轻巧的三轴振动换能器，包括三个焊接在一起的Konic IEPE剪切刀片，它们正交焊接到硬质阳极氧化铝外壳中。插件分别与外壳电绝缘，消除了接地环路干扰。低阻抗O / P可提供高度的抗噪能力（与50Hz时的等效电荷源设备相比提高了80dB），并允许与低成本同轴电缆一起使用。结构中隐含的附加机械隔离也几乎消除了应变引起的误差。

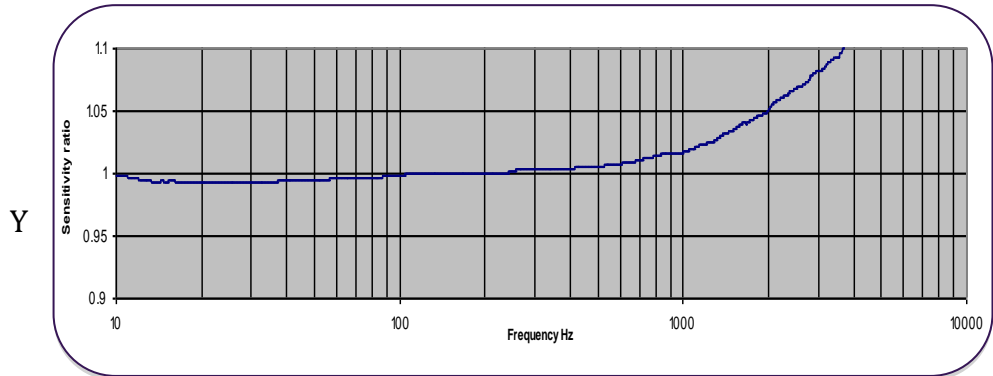


Typical Frequency Response

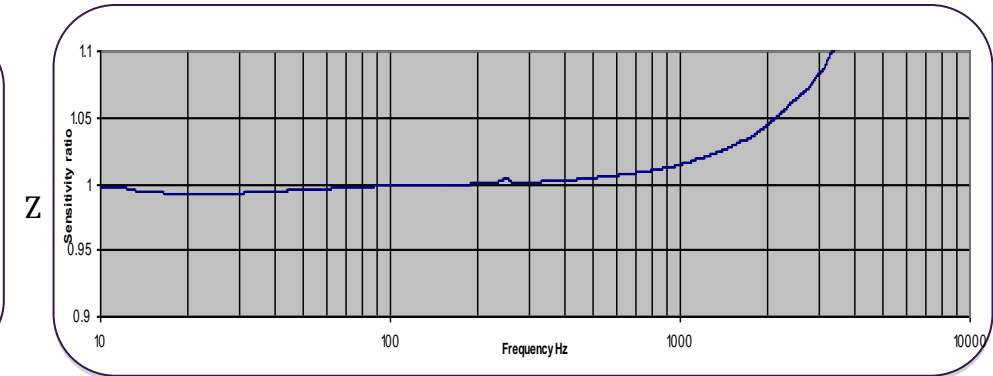
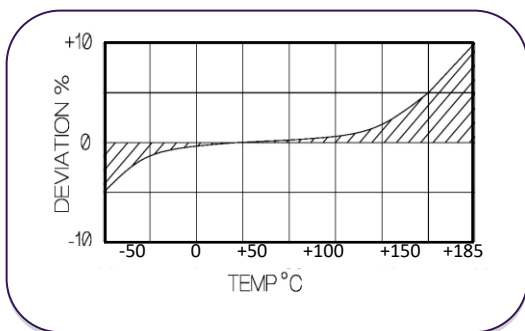
Konic设计的d33分量抑制特性最大程度地减小了跨轴误差，对于三轴测量的完整性特别有利。



多传感器解决方案还具有可维修的优势。如果插入件损坏，通常可以将其卸下并更换，从而节省了新的加速度计的成本。



Temperature Response



Please note: For information and reference only. Data should not be used as pass / fail criteria for calibration purposes





微型压电 IEPE 三轴加速度计: A/131/V

灵敏度: 10mV/g ~ 500 mV/g (±10%) 重量: 19g 最高温度: 125°C

Options

- Wideband temperature calibration
- Also available with DJB's unique high temperature IEPE solution capable of testing up to 185°C as an option.

Typical Spectral Noise (100mV/g)

1Hz	345µg/√Hz
10Hz	156µg/√Hz
100Hz	44µg/√Hz
1kHz	12.1µg/√Hz
10kHz	8.2µg/√Hz

	公制		英制	
Voltage Sensitivity ±10%	1.02mV/(m/s ²)	10.2mV/(m/s ²)	10mV/g	100mV/g
Resonant frequency	X/Y Axis 25 kHz		Z Axis 28 kHz	
Typical Frequency Response ±5% ±10%	1Hz - 3kHz 0.7Hz – 4kHz			
Cross axis error	≤5% max			
Temperature range	-50/+125°C		-58/+257°F	
Voltage sensitivity deviation (20°C/68°F)	-5% @ -50°C +5% @ +125°C ±10% @ +185°C		-5% @ -58°F +5% @ +257°F ±10% @ +365°F	
Supply voltage	15/35 V DC			
Supply current	2/20mA			
Bias voltage	9/10 V DC			
Base strain sens/strain	<0.01			
Max continuous accn.g sine	9806m/s ²		1000g	
Case/Block Material	Inserts stainless steel 303 S31/ Aluminium Mounting Block			
Mounting	2x3.57mm through holes		2x 0.14in through holes	
Weight	19g		0.67oz	
Case seal	Transducer inserts welded and bonded into hard anodized aluminium block			
Size	19.1 x 19.1 x 11.7mm		0.75 x 0.75 x 0.46in	
Connector	3 x 10-32 UNF Microdot			

Please note: For information and reference only. Data should not be used as pass / fail criteria for calibration purposes