

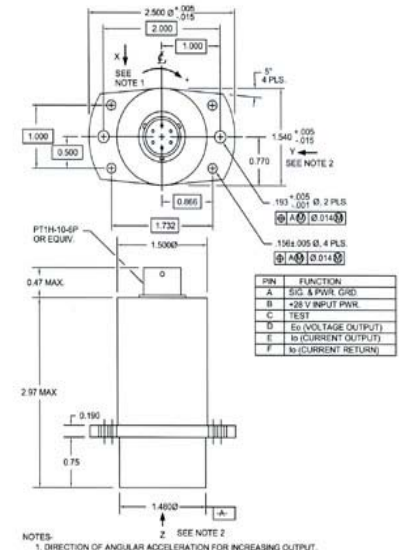
力平衡式/伺服式 角加速度计

SR-107RFR, SR-207RFR

SR-107RFR和SR-207RFR是精密力平衡角加速度计。 这种设计利用了感应角加速度的流体转子概念，并结合了哥伦比亚专利的HP悬架系统，在恶劣的环境条件下提供了极高的可靠性和坚固性。 这些加速度计具有出色的偏置稳定性和线性加速度输入的抑制性能。

SR-107RFR使用+/- 15VDC电源工作，而SR-207RFR设计为使用不受调节的+24 VDC至+32 VDC飞机电源工作。 两种单元均提供高电平低阻抗输出，并且不需要额外的信号调节。 请向工厂咨询这些传感器的定制版本。

- * High Accuracy
- * High Performance Fluid Rotor Design



Specifications

	SR-107RFR	SR-207RFR
Operational		
Ranges Available	±10 To ±500 Rad/Sec ²	
Output Voltage	±5 Volts into 100K Load	0.2 To 4.8 VDC into 100K Load
Excitation	±15 VDC <20 mA	+24 To +32 VDC <25 mA
Output Impedance	<5,000 Ohms	
Sensitive Axis Alignment	0.5 Deg	
Scale Factor Tolerance	±1%	
Scale Factor Temp Coefficient	0.05% / Deg C Max.	
Zero Bias	±0.1% F.R.	2.5 ±0.01 VDC
Null Temp Sensitivity	±0.4 mV / Deg C	
Natural Frequency	10 To 100 Hz Dependent Upon Range	
Damping	0.7 ±0.2	
Linear Acceleration Sensitivity	0.1% F.R./G or 0.05 Rad / Sec ² / G (greater value applies)	0.1% F.R./G or 0.01 Rad / Sec ² / G (greater value applies)
Cross Axis Sensitivity	1% Max.	
Output Noise (DC To 400 Hz)	<2 mV RMS	<3 mV RMS
Non-Linearity	±0.05% F.R.	
Hysteresis & Non-Repeatability	±0.1% F.R.	
Threshold & Resolution	0.005% F.R.	

Environmental

Temperature, Operating	-40 To +85 Deg C
Temperature, Storage	-40 To +85 Deg C
Vibration Survival (2 To 2,000 Hz)	15 G RMS, 0.5" Disp D.A.
Linear Acceleration Survival	100 G
Shock Survival	1000 G, 1 mSec
Ambient Pressure	0 To 5 Atmospheres
Humidity	95% R.H.

Physical

Weight	10 Oz (283 Gms)
Size	1.5 In. Dia. (Excluding Mtg Flange) x 2.97 In. H (3.8 cm Dia. Excluding Mtg Flange x 7.6 cm H)
Case Material	Anodized Aluminum
Sealing	Environmental
Connector	PT1H-10-6P or Equiv.
Optional Mating Connector	PT06A-10-6S or Equiv.

I/O Connector Pin Functions:

SR-107RFR		SR-207RFR	
Pin	Function	Pin	Function
A	+15 VDC	A	Sig & Pwr Grd
B	Ground *	B	+28V Input
C	-15 VDC	C	Test
D	E _o (Voltage Out)	D	E _o (Voltage Out)
E	Factory Test *	E	I _o (Current Out) *
F	Factory Test	F	I _o (Current Ret) *

*Note: Jumper Pins B & E for normal operation

*Note: Jumper Pins E & F for normal operation

Ordering Information:

SR-107RFR (+/- X Rad/Sec²)

M

SR-207RFR (+/- X Rad/Sec²)

M

Std Accelerometer w/Connector

Range +/- X Rad/Sec² (Required)

Mating Connector Supplied (Optional)

R32305



T: 150 210 98804

www.hansfordsensors.com.cn