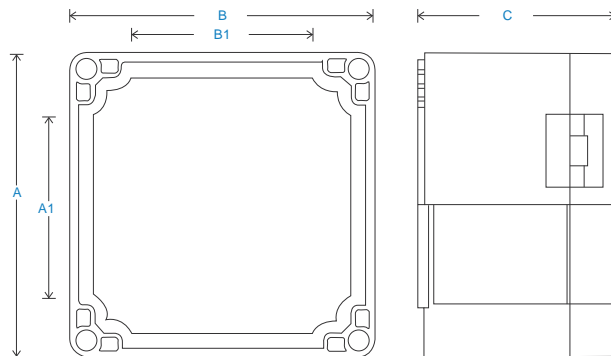
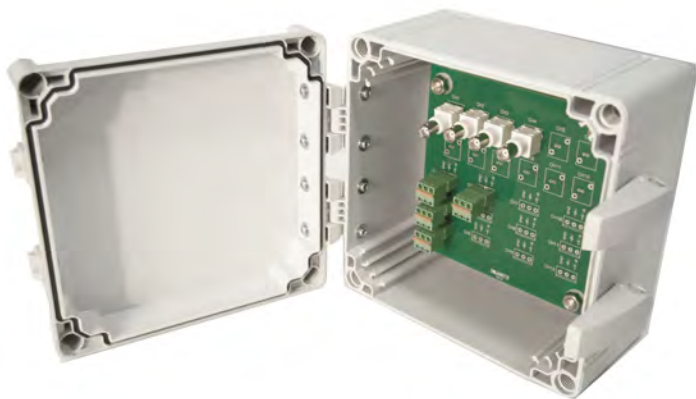


HS-CE 接线盒 聚碳酸酯纤维材质

主要特点

- 提供一个通过便携式数据收集器从加速度计读取数据的端子
- 一拖多输出



Technical Performance

Inputs	Via accelerometer	Door	Catches
Output	BNC as standard (alternatives can be specified in 'How To Order' table)	Glanding	Glands supplied but not fitted
Mounting Board	Engraved traffolyte panel (customisable upon request)		Holes are punched for: Single input M12 - \varnothing 3.5-7mm cable Single input M20 - \varnothing 7-13mm multi-core cable
Material	Polycarbonate (to be specified in options of 'How To Order' table)	Labelling	Multi input M20 - 3 x \varnothing 5.3mm Channel locations - other
Dimensions	see: 'How To Order' table	Mounting	labelling available upon request
Sealing	IP66	EMC	supplied are 4 x Brackets EN61326-1:2013
Termination	Spring loaded terminal		

How To Order

