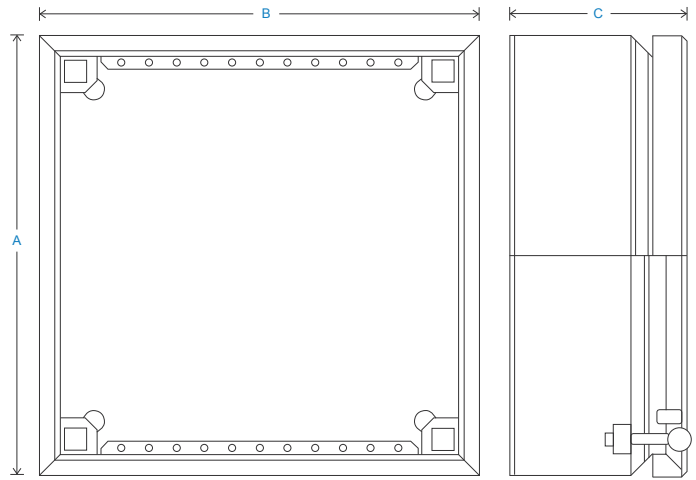
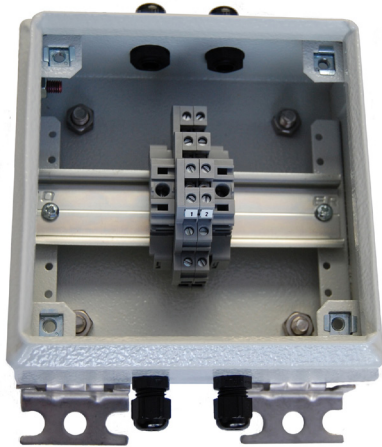


HS-JE 接线盒

低碳钢材质

主要特点

- 加速度计电缆接头
- 易于安装
- 灵活的组合



Technical Performance

Inputs	Accelerometer cabling	Glanding	Glands supplied but not fitted
Output	Multi-core glanding		Holes are punched for:
Material	Mild Steel painted RAL 7042 as standard (alternatives can be specified in options of 'How To Order' table)	Single input M12 - \varnothing 3.5-7mm cable	Single input M20 - \varnothing 7-13mm multi-core cable
Dimensions	see: 'How To Order' table	Multi input M20 - 3 x \varnothing 5.3mm	
Sealing	IP66	Labelling	Channel locations - other labelling available upon request
Termination	Klippon Type	Mounting	supplied are 4 x Brackets
Operating Temperature Range	-20 to 130°C	EMC	EN61326-1:2013

How To Order

